

SCIE NEWSLETTER



SCIE:

Symbiosis Centre for International Education (SCIE) is a centralised department of SIU created for International Students. This department takes care of international students' right from their admission till the time they graduate from Symbiosis University. It also acts as a common platform for International Students not only of SIU but from colleges and Universities across Pune. SCIE aspires to expand its horizons for academic enrichment with foreign higher educational institutions through collaborative arrangements. It works with universities that feature in the top 100 of Times Higher Education or QS World University ranking. Actively working with European partners for Study in India Programs & Erasmus + Projects facilitates students, faculty mobility and strategic partnerships.

SIU:

Symbiosis International University (SIU) was conceptualised by Prof. (Dr.) S. B. Mujumdar with an aim to promote international understanding through the medium of quality education. Its objective is to develop students, who not only have growth in their careers but are also counted as ambassadors for promoting the idea of 'Vasudhaiva Kutumbakam' which means 'The world is one family'. It aims at providing a feeling of being 'home away from home' for International students in India.

Credits:

A heartfelt thanks to everyone involved in the creation of this newsletter, including Ms. Megan Bavaskar for her design expertise as a Member of the Symbiosis International Students' Council, Ms. Aparna Soman for her role as Content Coordinator at SCIE, and the SCIE Department for their valuable content contributions.

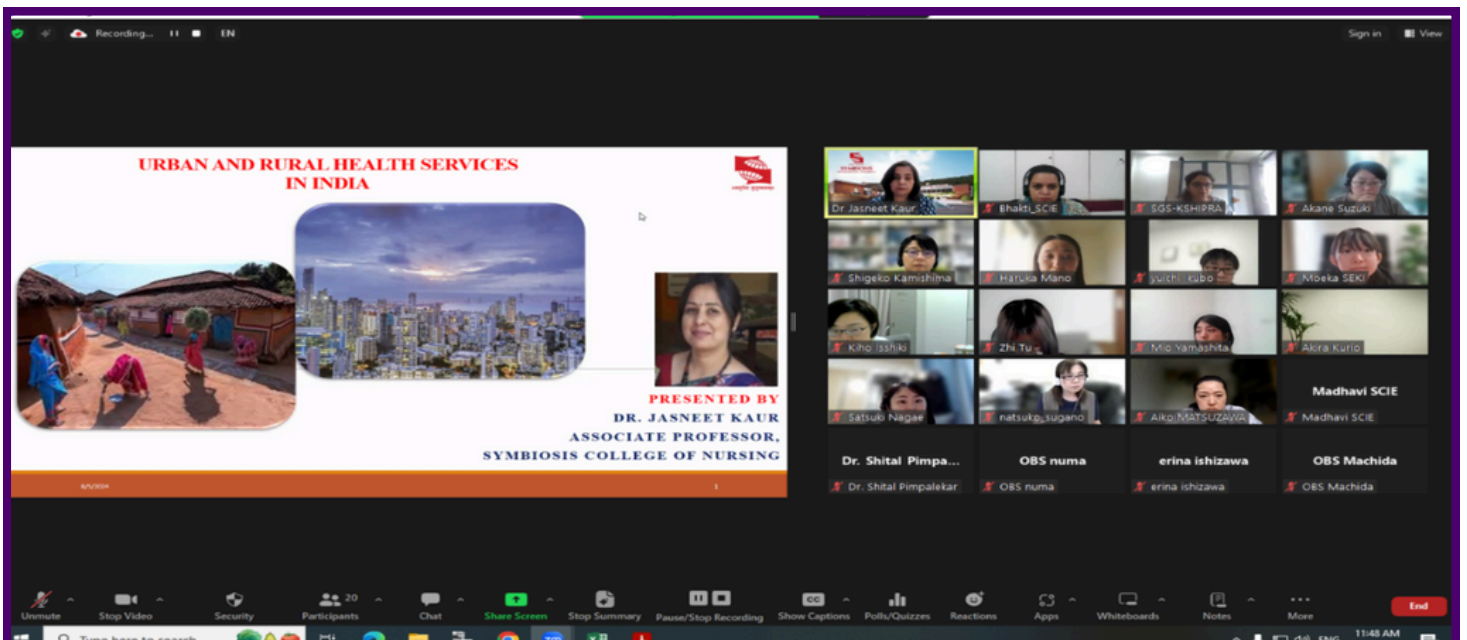
INITIATIVES AND COLLABORATIONS:

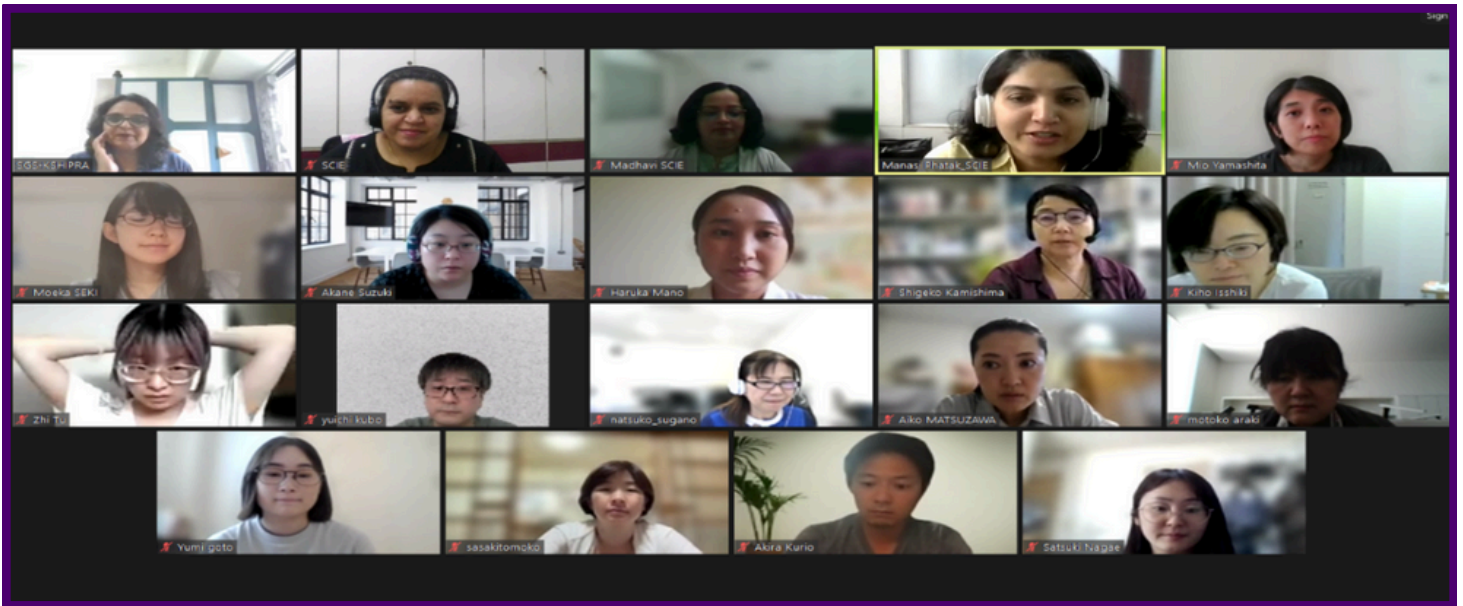


Symbiosis International (Deemed University) [SIU] and the University of New Hampshire Franklin Pierce School of Law [UNH Franklin Pierce] signed an Memorandum of Understanding (MoU) to enhance academic and research collaboration. The MoU signing ceremony was attended by Dr. Shashikala Gurple, Director and Dean Faculty of Law, and UNH Franklin Pierce was represented by Attorney Richard Samdperil, Adjunct Professor at UNH Franklin Pierce and Scholar in Residence at Symbiosis Law School, Pune. Dr. Anupama Kotur represented the Symbiosis Centre for International Education (SCIE).



Dean Megan Carpenter, Dean and Professor of Law, along with Ms. Sarah Dorner, Assistant Dean for Graduate Admissions and International Outreach attended the ceremony online





SCIE facilitated a virtual Study India program for total 15 students and faculty members belonging to the nursing fraternity from Chiba University, Himeji University, Tenshi University and St. Lukes (Seiroka University), Japan. Sessions were conducted by SCON faculty members while SCON students participated as buddies.



10 girls from St. Lukes (Seiroka University), Japan visited SIU for the Nursing focused Study India Program



SCIE conducted a Study India Program for 103 students and 5 faculty members from the nursing stream in association with SCON. This was the 2nd consecutive batch received from Josai International University (JIU), Japan.

CENTRE FOR EUROPEAN STUDIES:



**EXTRAORDINARY AND
PLENIPOTENTIARY DIPLOMATIST**

What does a Labour Win in the UK mean for India?



Prof Nidhi Piplani Kapur
Head
Symbiosis Centre for European Studies (SCES)
Symbiosis International (Deemed University), SIU



Ms Nikita Varghese
Senior Analyst
MitKat Advisory

**SYMBIOSIS CENTRE FOR EUROPEAN STUDIES (SCES)
SYMBIOSIS CENTRE FOR INTERNATIONAL EDUCATION (SCIE)**

Prof Nidhi Piplani Kapur and Ms Nikita Varghese co-authored an article on 'What does a Labour Win in the UK mean in India?' that has been published in Extraordinary and Plenipotentiary Diplomatist.

[CHECK OUT THE LATEST PUBLICATION HERE](#)

CENTRE FOR EUROPEAN STUDIES:

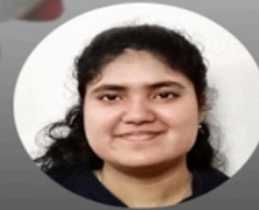


EXTRAORDINARY AND PLENIPOTENTIARY DIPLOMATIST

INDIA-AUSTRIA RELATIONS: DEEPENING COOPERATION IN CENTRAL EUROPE



Prof Nidhi Piplani Kapur
Head
Symbiosis Centre for European Studies
(SCES)
Symbiosis International (Deemed University),
SIU



Ms Poulomi Banerjee
Research Associate (Intern)
Symbiosis Centre for European Studies
(SCES)

SYMBIOSIS CENTRE FOR EUROPEAN STUDIES (SCES)
SYMBIOSIS CENTRE FOR INTERNATIONAL EDUCATION (SCIE)

Prof Nidhi Piplani Kapur and Ms Poulomi Banerjee co-authored an article on 'India-Austria Relations: Deepening Cooperation in Central Europe' that has been published in Extraordinary and Plenipotentiary Diplomatist.

[CHECK OUT THE LATEST PUBLICATION HERE](#)

INTERNATIONAL STUDENT RELATIONS AND EVENTS:



SCIE conducted an 'Orientation Program' for international students joining Symbiosis International (Deemed University) (SIU) for undergraduate courses. The program was conducted to familiarize students with Symbiosis Centre for International Education and help them settle into their new environment at the university.

The ceremony had 2 presentations on 'Adjusting to a New Normal' by Dr. Girija Mahale, Head - Symbiosis Centre for Emotional Well Being (SCEW) and 'Diversity and Cross-Cultural Sensitization' by Dr. Anita Patankar, Director - SCIE, that spoke about navigating the 'student life' on campus.



The Search Committee members from Rotary International visited SIU, Lavale. They were with us to inspect the university facilities at the Lavale campus, and have discussions regarding our application to set up a Rotary Peace Centre at SIU in 2027.

The delegation included the Rotary members - Marty Helman, Meredith Burlew, Laura Descher. The meeting was attended by the Chancellor and Vice-Chancellor of SIU, all the Directors and Registrar along with distinguished professors.

The Search Committee Members were also given a tour of the Dr. Babasaheb Ambedkar Museum and Memorial followed by a visit to the Viman nagar campus where they had a meeting with the members of Rotary Club from Pune, India.